

Hagalis AG
Kristallanalysen -
Qualitätsprüfung
Qualitätsberatung -
Medizinische Diagnosen



Goldbacherstrasse 8
88662 Überlingen

Origin of Life Vertrieb Gbr
Siegfried Müller

Fliederstr. 4

88255 Baidt

09.11.2004

Crystal analysis

Water study 2004

Evaluation

Examined samples:

Origin of Life selling Gbr, water test: Origin of Life essence

Within a trade-off study, with which altogether 30 samples were pulled, of which 30 came here to the comparative evaluation, the spagyrische Kristallisat were examined, which was won from the liquid phase and the fixed phase of the samples. The crystals develop thereby from the extraction of the distillate arrears, which were ashed before and calcinized. These crystal salts are combined with the distillate and applied on slides. The liquid is brought at ambient temperature to the evaporation. Typically assigned crystal pictures, which permit a statement about the quality of the vitalities of the samples, develop for the samples.

Production of the Kristallisates in the overview:

1. Distillation of the sample without additives of water or other solvents at low temperatures.
2. Production of the crystal salts from the distillate arrears by ashing and Calcination.
3. Combination of distillate and crystals salts and following applying on slides.

- Emergence of the typical, the samples of associated crystal pictures -

The crystal pictures are at any time reproducible from the same sample and always show those the samples of typically associated crystal pictures.

Origin of Life selling Gbr, water test: Origin of Life Essenz

In the large water study 2004 30 different samples of different manufacturers were examined. The water purifications were divided into 3 groups:

A group with filter and reverse osmosis procedure, a group with physical water purification like e.g. Magnet devices with permanent magnetic effect and the third group contain devices, which work energetically. Each group is to be rated for itself and among themselves not comparable. Within the group comparisons are possible, which a quality increase represents opposite the neutral sample more or less strongly. All samples were pulled under same conditions and subjected to the same parameters, so that foreign influences could be excluded clearly. To that extent each sample is equally treated. The results are on consciously selected parameters, which were examined here to lead back without thereby the entire quality spectrum of water purification equipment can be against-reflected. To that extent a quality accomplished as comprehensively as possible by us presents itself, which cannot reflect however always the entire efficiency. Therefore it can come in individual cases also to results within this test row, which are perhaps not satisfying for the manufacturer, without however the statement is made here that the equipment does not serve its purpose. Perhaps here the efficiency of the water purification cannot have been completely covered by the investigation spectrum and the equipment proves its efficiency within other ranges. Therefore not finally the conclusion is to be drawn from this final evaluation whether equipment has a value or not. This must be perhaps individually determined in the single case. Nevertheless this study can represent a conclusive statement, which helps the final customer to make the efficiency of a water purification transparency. It is to serve the final customer as manual with its decision to select the equipment fitting individually for it. For this it requires often still another further individually tailored advice. In the context of the possibilities this study represents thus a kind manual, which also makes it possible that manufacturers compare themselves among themselves in their achievements. A goal of such a test is in each case to improve and to the manufacturers the possibility of a feedback give altogether the water quality, it them made possible to continue to work on the own quality standards and still increase these.

The qualitative factors were determined from the crystal analysis and the selected chemical parameter oxygen - measurement, pH measurement, conductance measurement in mS/cm, drying arrears measurement in mg/litre, the nitrate content in mg/litres and the redox potential, as well as all parameters of the German TVO raised, in order to place these in a total evaluation comparatively opposite. The weighting of the two main factors: Crystal analysis and chemical parameters are equally 1:1. With the crystal analysis purely qualitative aspects come to carrying, while with the chemical parameters the measurable quantitative values are raised. Within the crystal analysis takes place in accordance with evaluation the selected 5 parameters: evaluation, forms, propagation, angle configuration as well as intensity of the crystals in each case with equivalent weighting. With the chemical parameters is the weighting as follows: Oxygen - measurement 1/12, pH measurement 2/12, conductance measurement in mS/cm 2/12, drying arrears measurement in mg/litres of 2/12 and the nitrate content in mg/litres of 3/12, redox potential in mV 2/12.

The entire parameters are evaluated together and the evaluation of the respective samples effected after the point system. The respective 5 parameters of both main factors receive depending upon value between -3 and +3 points, from which the lowest value of -30 results points, while the maximum score is +30 points and the certification takes place on the basis the points, whereby the maximum note 1 and the worst note 6 are.

Crystal analysis:

The essence examined here belongs to the group of the energetic water purification devices. The sensory examination did not result in any referring to quality-reducing aspects. The water was clearly, neutrally and freely of suspended matters or turbidity, the taste was soft. To that extent nothing is to be complained of with the sensory examination.

The crystal analysis shows a clear change opposite the neutral sample. The crystal structures were completely transformed, so that hardly 90° angle structures, which point on pollutant information, are to be seen more.

Very well minted 60° shows up here angle structures excluding, which coin/shape the entire picture. Such well formed crystals are only with high-quality spring waters of top quality and find their completion with in fine six-star shaped 60° angles. Thus a very good spring water quality without objection shows up here. 90° angle structures, those on impurities and pollutants point do not arise here not.

The surface formation of the crystals increased opposite the neutral sample very strongly, which points on a very good increase of the bio-availability of the minerals in the sample. The sample is so substantially better suitable as food for the supply of trace elements and minerals than the neutral sample. At the same time the level of the vital forces increased altogether clearly. The energy balance precipitates substantially more highly as with the neutral sample and is altogether than very positively to be evaluated. It is present in the sample a clear, strong energy surplus. The human metabolism is supported by the very high bio-availability of the trace elements and the energy surplus clearly positively lively and. To that extent the biological priority of this sample is to be regarded here as very high-quality.

The technical water quality changed just like the biological water quality immensely. No compression zones arise more, so that a precipitation of the minerals is to be expected hardly more. This means that the calcifying danger could be substantially reduced by the application of the essence.

The sample draws even surprisingly with a high-quality spring water quality. Here obviously the natural characteristics of the Bodensee water from the tap water supply of the city Überlingen could be so strongly re-activated, as it comes at the withdrawal place into 60 meters depth with Sipplingen without chemical dressing to light.

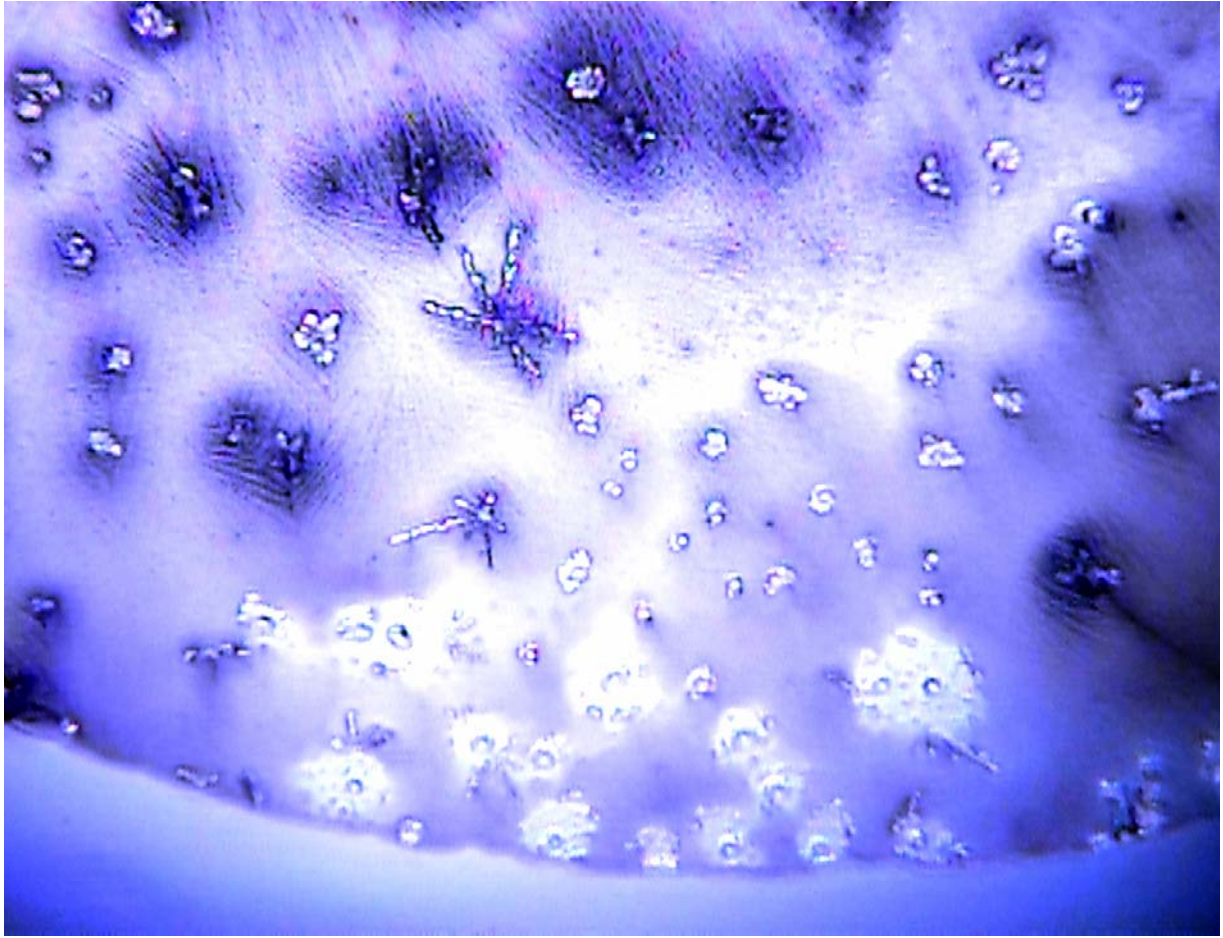
Further details are described in connection with the pictures.

Chemical parameters:

Evaluation	oxygen content mg/l pH measurement	pH- Test	conductance measurement	μ S/cm drying arrears measurement	mg/litre of redox measurement in mV	nitrate content in mg/litres
Probe / Ort der Probennahme	value/of +3 to -3 Points	value/of +3 to -3 Points	value/of +3 to -3 Points	value/of +3 to -3 Points	value/of +3 to -3 Points	value/of +3 to -3 Points
Neutral sample Überlingen	1,3	8,07	327	116	435	4,4
Origin of Life Essenz	1,2	8,19	322	116	437	4,4
Differenz	- 0,1	+ 0,12	- 5	-	+ 2	-

Comment chemical parameters:

Opposite the neutral sample hardly changes resulted. Simply the pH value rose somewhat, which leads to a worse point valuation within the chemical range, which is by far made up for however by the very positive results within the crystal analysis.

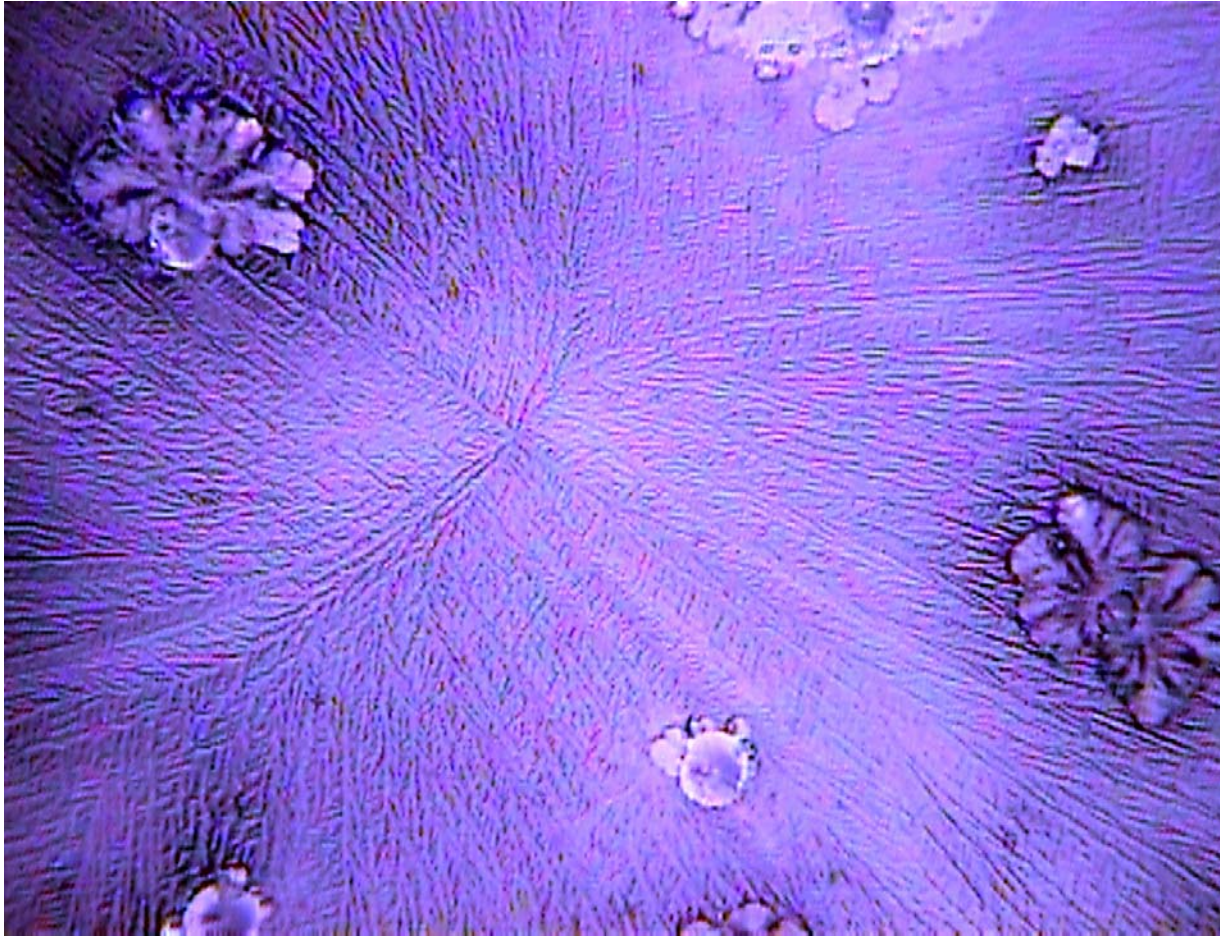


1. Frame

40 - subject enlargement

Sample: Origin of Life selling Gbr, water test: Origin of Life essence

In the frame a regular crystal structure without crystal-free zones shows up. This means that the energy balance in the sample is very high and the level of the neutral sample towers above by far. Predominantly purify, crystals branched out far have themselves formed, which point on a revitalization of the water test. 90° angle structures are not present, so that the pollutant information could be absorbed and neutralized completely.

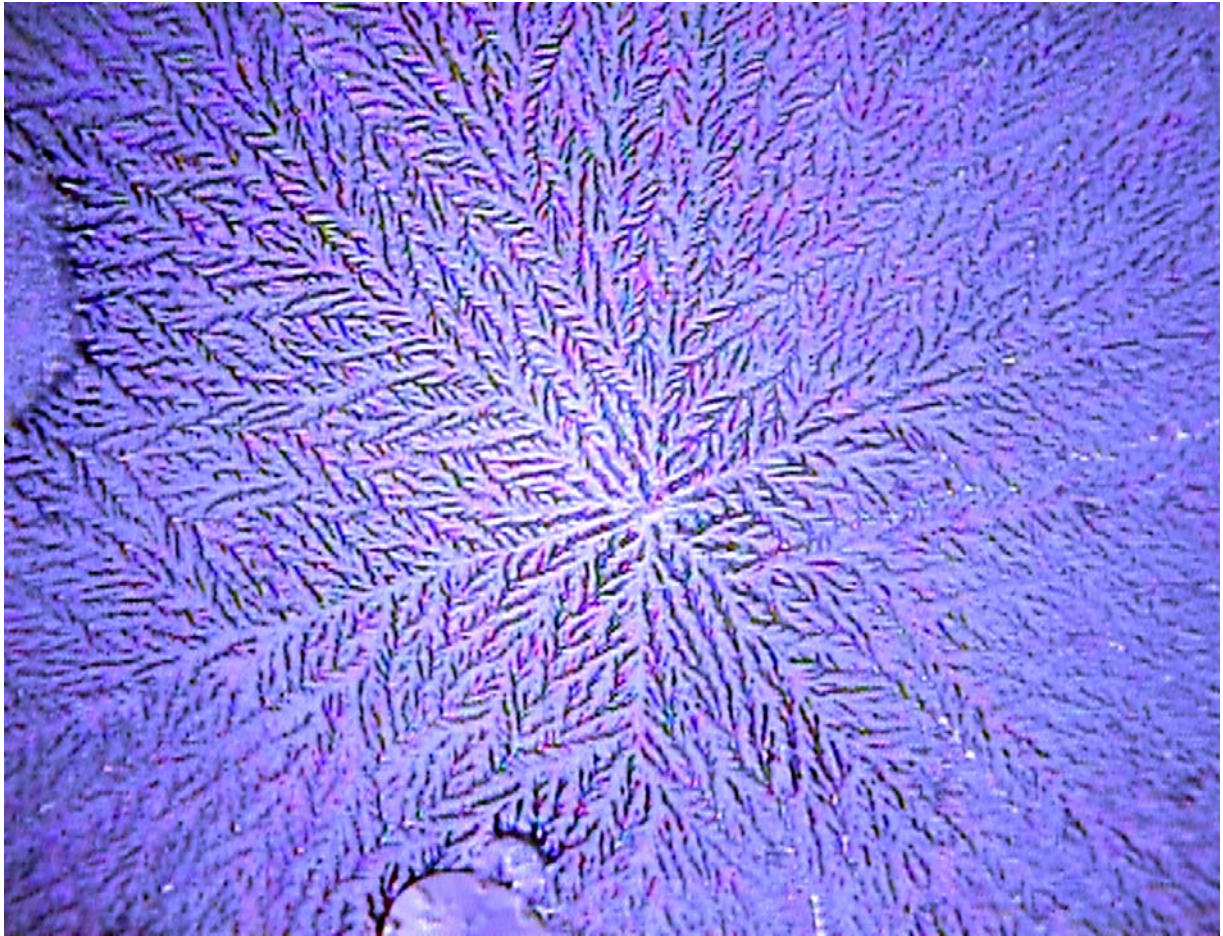


2. Half-image

100 - subject enlargement

Sample: Origin of Life selling Gbr, water test: Origin of Life essence

In the half-image show up very fine crystal structures with a high surface formation, which point on the increased bio-availability of the minerals. Here the food quality increased clearly opposite the neutral sample. At the same time also the technical water quality rose clearly and the calcifying danger accordingly sank. The sample does not show any referring to pollutants or other impurities and is thus than being defined perfectly. Step bloom-like crystalline forms arise, how this from high-quality spring water samples admits is.



3. Large picture

400 - subject enlargement

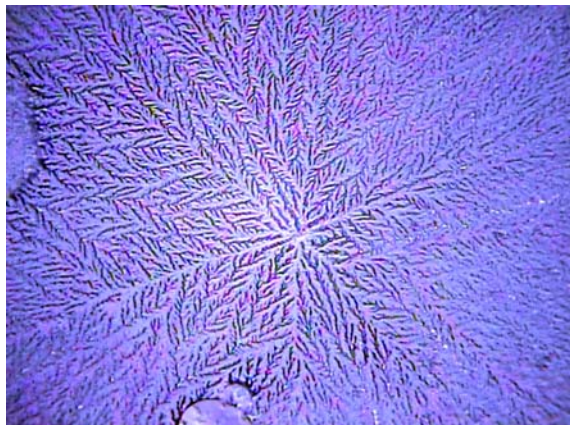
Sample: Origin of Life selling Gbr, water test: Origin of Life essence

In the large picture shows up a well trained star configuration, which approximates clearly to the 60° angle. Such star shaped crystals show up normally only with spring water quality. This means that the sample of such a high-quality quality be approximated and the energy level could be lifted importantly. The positive energy bilance communicates itself animating and the metabolism to the consumer energizing. The fine surface formation and the simultaneous rise of the energy level were more improved than on the average with these essence. The star configurations dominate clearly the crystal picture, which arouses the impression of a high-quality natural glacier water from top quality.

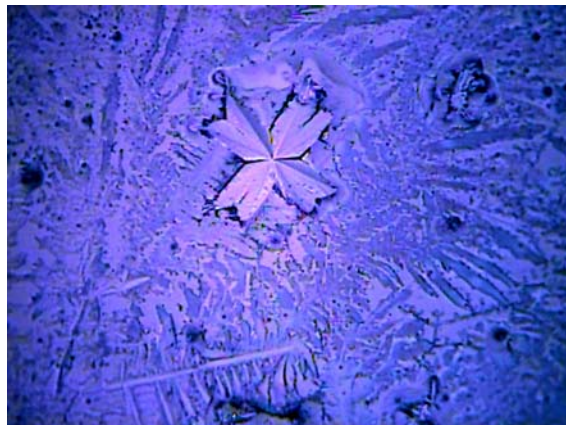
Summary:

Sample: Origin of Life selling Gbr, water test: Origin of Life essence

Picture comparison with the neutral sample:



Sample: Origin of Life essence, 400 subject increases



Sample: Neutrally, increases 400 subject

Both in more technical and in biological regard an immense quality projection/lead resulted here opposite the neutral sample. Altogether the essence advanced by this positive effectiveness into the leading group of the certification-scale and also this test row. Relevant were here above all the changes of the structures in the water, which were completely again arranged and a strong approximation to a high-quality spring water quality to have experienced, during itself the chemical parameters, up to the redox potential, not substantially opposite the neutral sample have changed. The extremely strong positive change of the entire structure of the water, which brings out dominant only star configurations, reaches an overall quality of a high-quality spring water.

In the total valuation this sample comes on the highest score and thus is it test winners.

We evaluate the sample with the note 1.8 and the judgement well, tendency very well, which means a difference of 1,0 points of note opposite the neutral sample. The immense advantage, which rises from these energising the water test for the consumer, justifies the acquisition of such a water purification system with security and receives from us the accordingly good recommendation.

In order on the medical effects and around more exact statements to make to be able, however further studies are received in would have to be operated connection with blood crystal analyses.

This is unfortunately not possible in the context of this study.

Überlingen, the 09.11.2004



A. Schulz

(Investigation leaders)